

	PETROL 95 ULP	PETROL 93 ULP & LRP	DIESEL 0.05%	DIESEL 0.005%	ILL. PAR.
GAUTENG PUMP PRICE (SA c/l) AS FROM 04/05/2022	2,184.000	2,151.000	-	-	-
WHOLESALE PRICE (SA c/l) AS FROM 04/05/2022	-	-	2,199.440	2,215.840	1,664.288
SINGLE NATIONAL MAXIMUM RETAIL PRICE	-	-	-	-	2,194.000
BASIC FUEL PRICE - 17/05/2022 (SA c/l)	1,610.349	1,583.339	1,576.688	1,587.888	1,540.703
PRESS RELEASE CONTRIBUTION TO BFP 04/05/2022 - 17/05/2022 (SA c/l)	1,264.410	1,241.410	1,497.630	1,514.030	1,446.128
UNIT OVER/(UNDER) RECOVERY - 17/05/2022 (SA c/l)	(345.939)	(341.929)	(79.058)	(73.858)	(94.575)
AVERAGE BASIC FUEL PRICE 28/04/2022 - 17/05/2022	1,485.348	1,457.985	1,624.024	1,639.511	1,623.257
AVERAGE UNIT OVER/(UNDER) RECOVERY 28/04/2022 - 17/05/2022	(216.852)	(212.489)	(153.537)	(150.909)	(200.843)

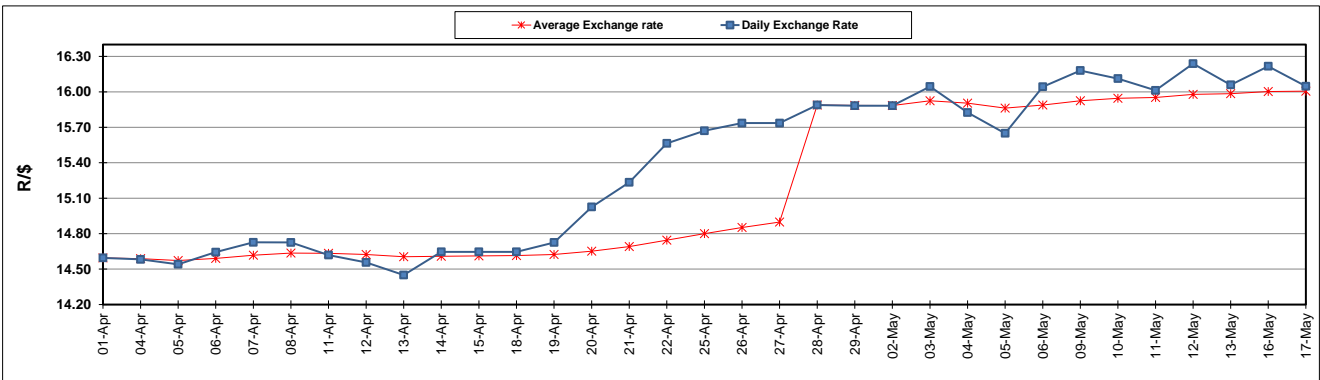
ANALYSIS MOVEMENT OF AVERAGE OVER/(UNDER) RECOVERY

- MOVEMENT IN INTERNATIONAL PRODUCT PRICES
- MOVEMENT IN EXCHANGE RATE
- AVERAGE UNIT OVER/(UNDER) RECOVERY 28/04/2022 - 17/05/2022

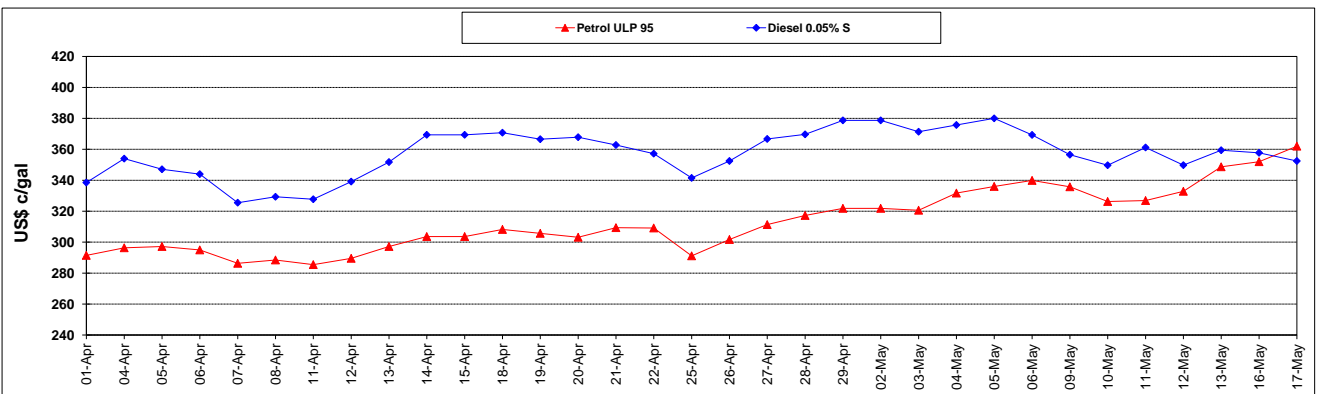
	PETROL 95	PETROL 93	DIESEL 0.05%	DIESEL 0.005%	ILL. PAR.
MOVEMENT IN INTERNATIONAL PRODUCT PRICES	(114.075)	(111.606)	(41.165)	(37.466)	(88.524)
MOVEMENT IN EXCHANGE RATE	(102.777)	(100.883)	(112.372)	(113.444)	(112.319)
AVERAGE UNIT OVER/(UNDER) RECOVERY 28/04/2022 - 17/05/2022	(216.852)	(212.489)	(153.537)	(150.909)	(200.843)

R/\$ EXCHANGE RATE - (R/\$16.04730 - 17/05/2022)

EXCHANGE RATE USED IN BASIC FUEL PRICE



INTERNATIONAL PRODUCT PRICES OF BASKET USED IN BASIC FUEL PRICE



BASIC FUEL PRICE IN SA CENTS PER LITRE

